

Examination Format for Path-1 Students

- Examination (in-house) is conducted usually in two formats:

1. Visuals – This issue is discussed in the file here
2. Clinical Vignette*

*A separate file on this will be on S-drive by the end of the next week

1

1. Visuals

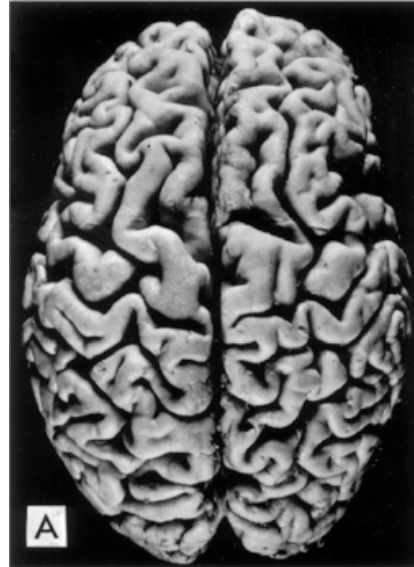
- A visual is accompanied side by a question
- Students have to study the question and the visual
- Next step is to select **ONE** best response
- An example is shown in the next slide

2

Q - 1

- This brain is from a patient who died of complications of Alzheimer disease. The change seen here is best described as:

- A – Widening of the sulci
- B – Widening of the sulci and narrowing of the gyri
- C – Narrowing of the sulci
- D – Narrowing of the gyri
- E – Widening of the gyri



© Elsevier 2005

3

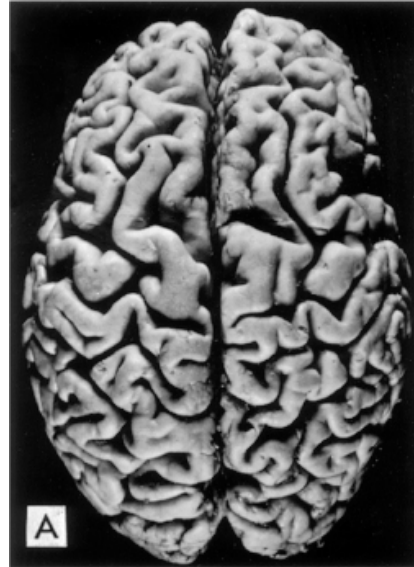
- The same visual may be used by a teacher to frame question of different 'levels'
- Next two examples will make this clear

4

Q - 2

An atrophic brain is shown here. The most likely clinical diagnosis in this case is:

- A – Malignant brain tumor
- B – Alzheimer disease
- C – Multiple sclerosis
- D – Myasthenia gravis
- E – Chronic Alcoholism



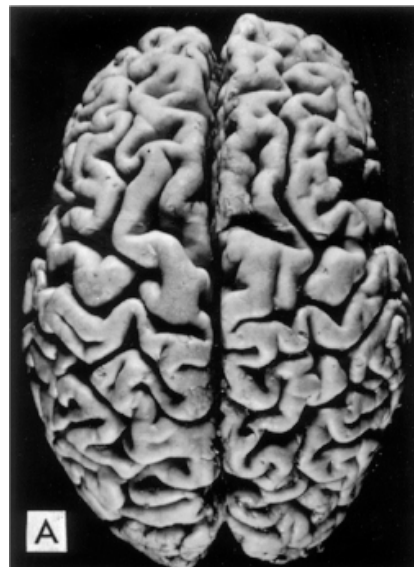
© Elsevier 2005

5

Q - 3

- This brain is from a patient who died of complications of Alzheimer disease. The change seen here is best described as:

- A – Widening of the sulci
- B – Widening of the sulci and narrowing of the gyri
- C – Narrowing of the sulci
- D – Narrowing of the gyri
- E – Widening of the gyri



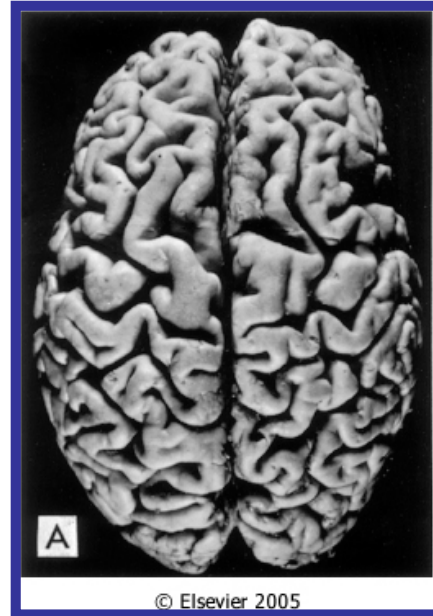
© Elsevier 2005

6

Q - 4

- This brain shows widened sulci and narrowed gyri. These changes correspond to:

- A – Hypertrophy
- B – Atrophy
- C – Hyperplasia
- D – Metaplasia
- E – Dysplasia



7

How many options?

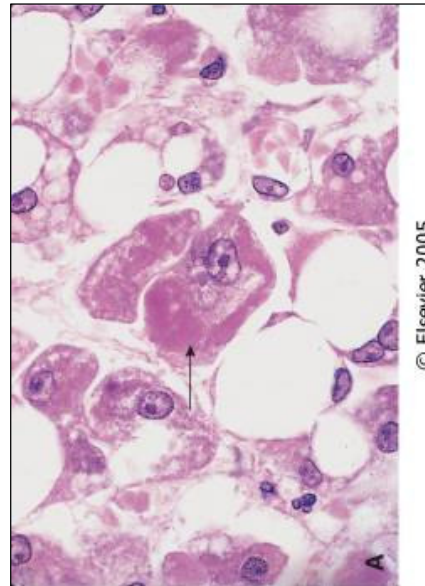
- More than 5 options may be offered
- This is to minimize or eliminate the 'luck factor' while choosing a response
- Next question will be very useful to understand

8

Q - 5

- Liver biopsy shown here is most likely obtained from a patient suffering from:

- A – Alcoholic hepatitis
- B – Tuberculosis
- C – Viral hepatitis
- D – Vitamin D intoxication
- E – Hyperthyroidism
- F – Sarcoidosis
- G – Hepatocellular carcinoma



9

- Visuals that are used to test your knowledge may be related to
 - Gross
 - Microscopy
 - Immunohistochemistry
 - Electron Microscopy Etc.,

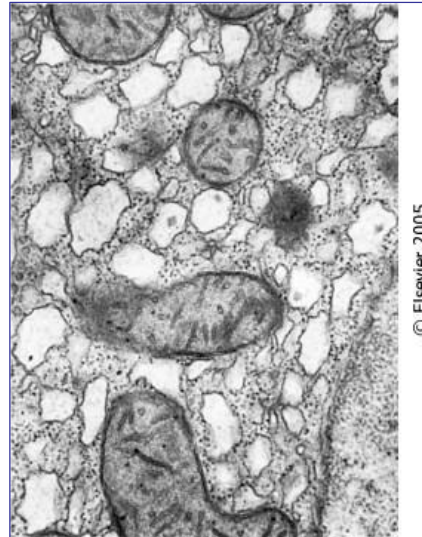
A student therefore needs to very careful
Next question will make all this clear..

10

Q - 6

- This visual confirms the presence of:

- A – Swollen Endoplasmic reticulum
- B – Swollen Mitochondria
- C – Swollen Golgi bodies
- D – Vacuolated Mitochondria
- E – Vacuolated Endoplasmic reticulum
- F – Fat droplets



11

Good luck and perform well

12